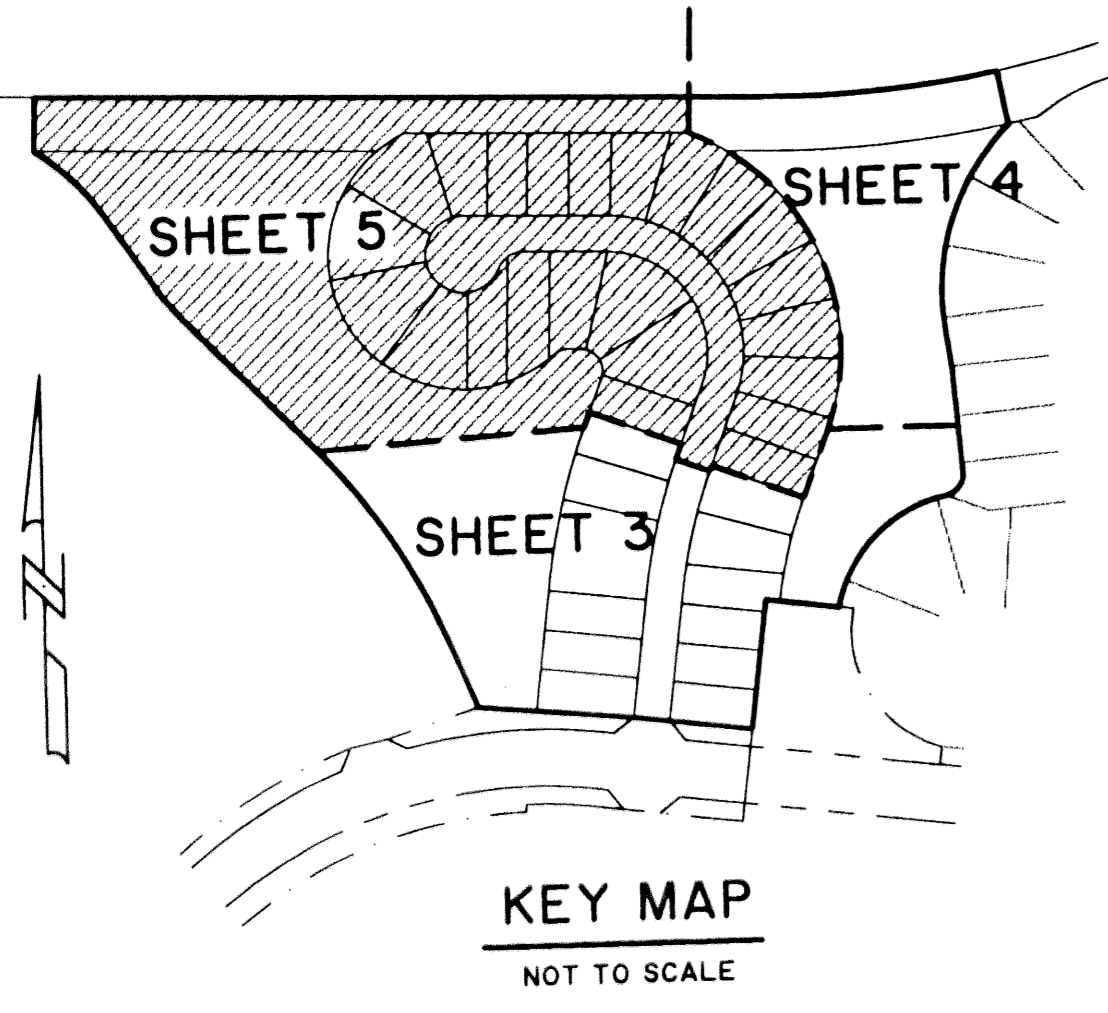


# BAYWINDS R.P.D. PLAT NO. 11

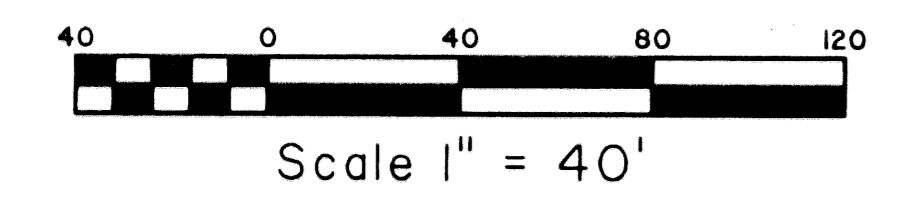
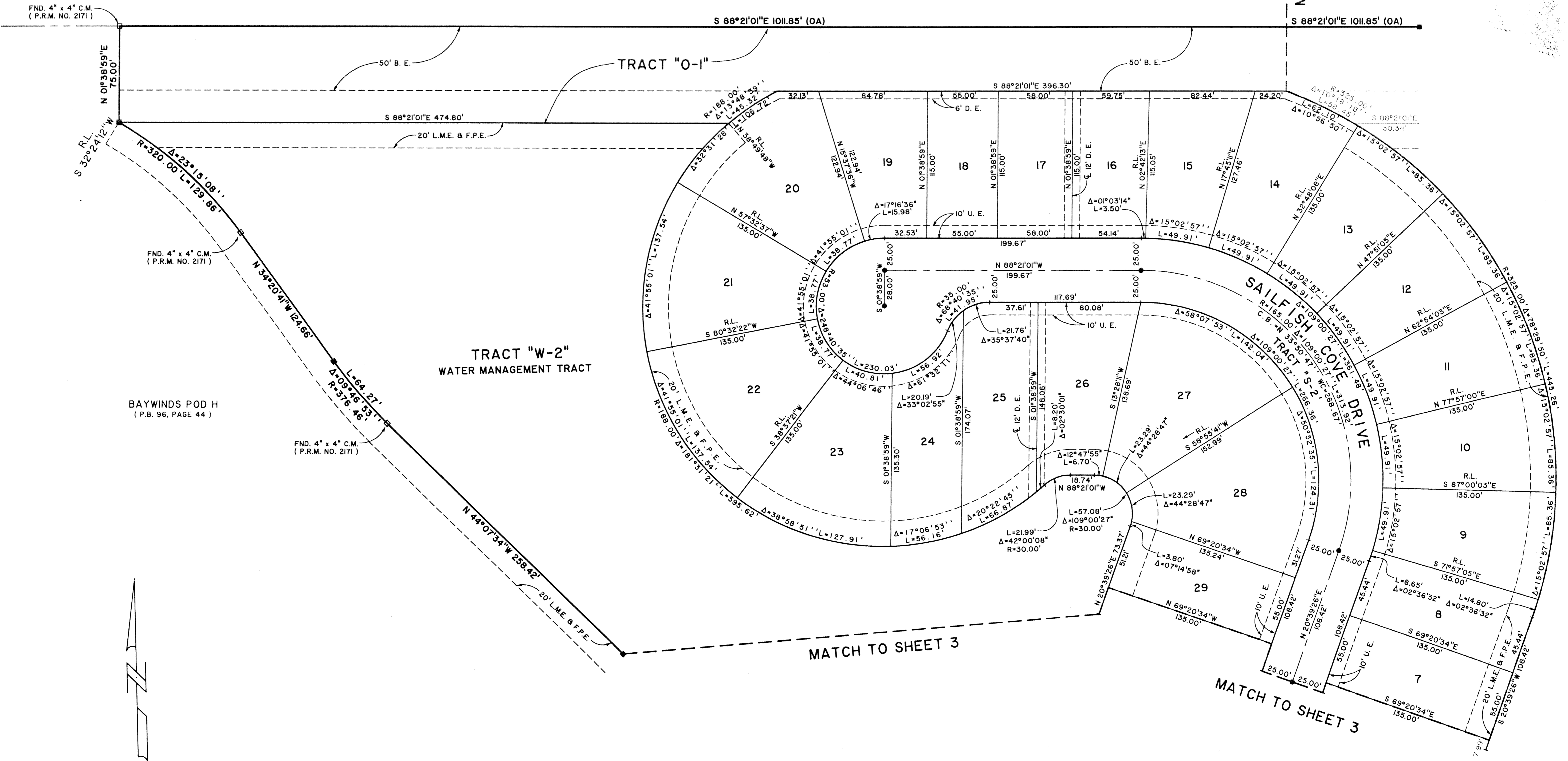
LYING IN SECTION 19, TOWNSHIP 43 SOUTH, RANGE 42 EAST,  
CITY OF WEST PALM BEACH, PALM BEACH COUNTY, FLORIDA.  
SHEET 5 OF 5



STATE OF FLORIDA SS  
COUNTY OF PALM BEACH  
THIS PLAT WAS FILED FOR RECORD AT \_\_\_\_\_  
M. THIS DAY OF \_\_\_\_\_ 2002  
AND DULY RECORDED IN PLAT BOOK NO. \_\_\_\_\_  
ON PAGE \_\_\_\_\_  
DOROTHY H. WILKEN,  
CLERK OF THE CIRCUIT COURT  
BY \_\_\_\_\_ D.C.

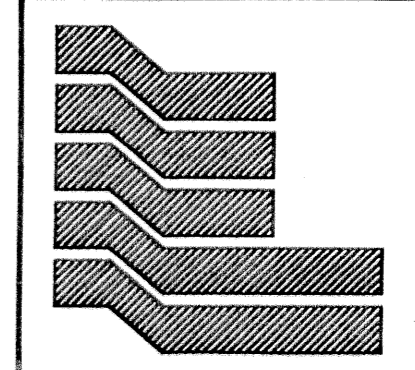
NOT PLATTED

MATCH TO SHEET 3



MATCH TO SHEET 4

MATCH TO SHEET 3



Landmark Surveying & Mapping Inc.  
1850 Forest Hill Boulevard  
Ph. (561) 433-5405 Suite 100 W.P.B. Florida  
LB # 4396

**BAYWINDS R.P.D. PLAT NO. 11**  
(TRACT "G")

L:\P\11\11\005\2484\2484S114 Thu Jan 02 11:52:16 2003 PLOTTED BY L. C. BISPOT